

Coprinodi-Campanelle-Conchiglie



Minuterie Metalliche - Accessori per Abbigliamento e Pelletteria
Tranciatura Metalli e Piegatura Filo - Progettazione Stampi

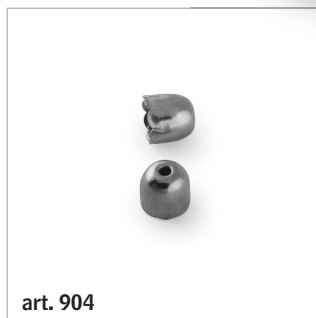
Coprinodi



art. 14



art. 15



art. 904

art. 14
CAMPANELLA
tonda grande

art. 15
CAMPANELLA
tonda piccola

art. 904
CAMPANELLA
tonda mini

art. 66
CAMPANELLA
ovale grande



art. 66



art. 67

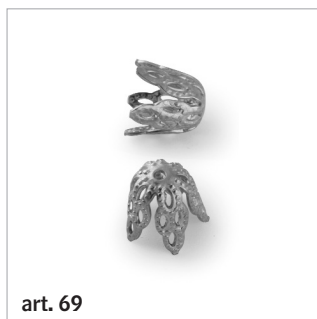


art. 68

art. 67
CAMPANELLA
ovale media

art. 68
CAMPANELLA
ovale piccola

art. 69
CAMPANELLA
zigrinata



art. 69

art. 9
CONCHIGLIA
mini

art. 10
CONCHIGLIA
grande

art. 11
CONCHIGLIA
piccola

CONCHIGLIE



art. 9

art. 10

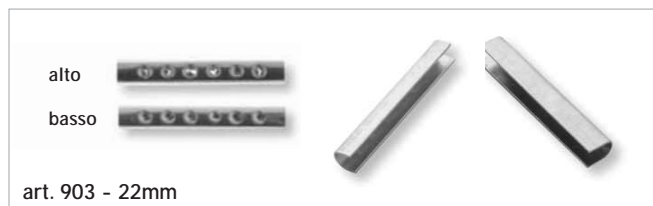
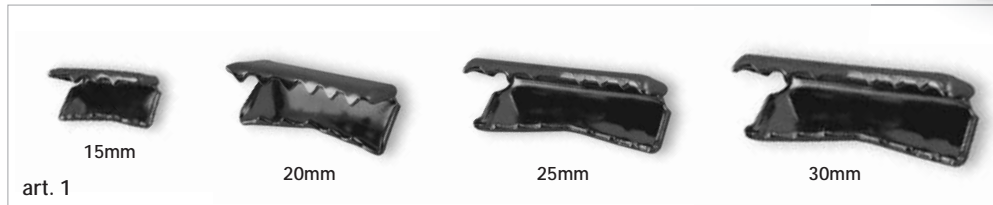
art. 11

Terminali



Minuterie Metalliche - Accessori per Abbigliamento e Pelletteria
Tranciatura Metalli e Piegatura Filo - Progettazione Stampi

Terminali



SU RICHIESTA
SI ESEGUONO
MISURE DIFFERENTI

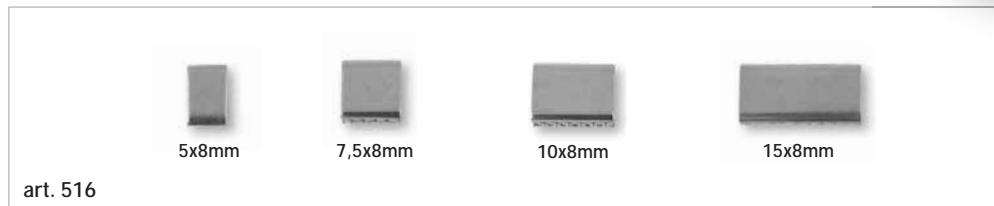
art. 1
TERMINALE
semplice

art. 902
TERMINALE
per stringhe

art. 903
TERMINALE
per stringhe

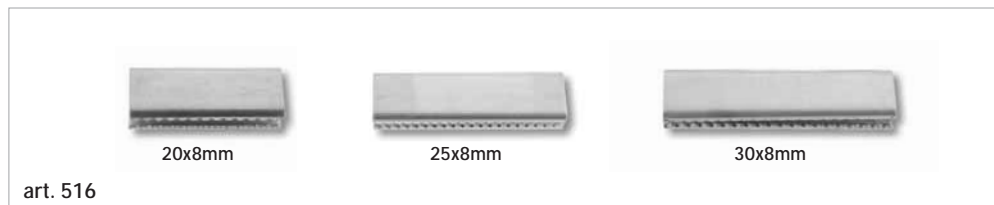
art. 3
TERMINALE
per stringhe

art. 918
TERMINALE ogiva
17mm



art. 516
TERMINALI
ottone

SU RICHIESTA
SI ESEGUONO
MISURE DIFFERENTI





art. 315
TERMINALE
piastrina semitonda

art. 71
TERMINALE
per collane

art. 91/B
CAPICORDA
per spirale

